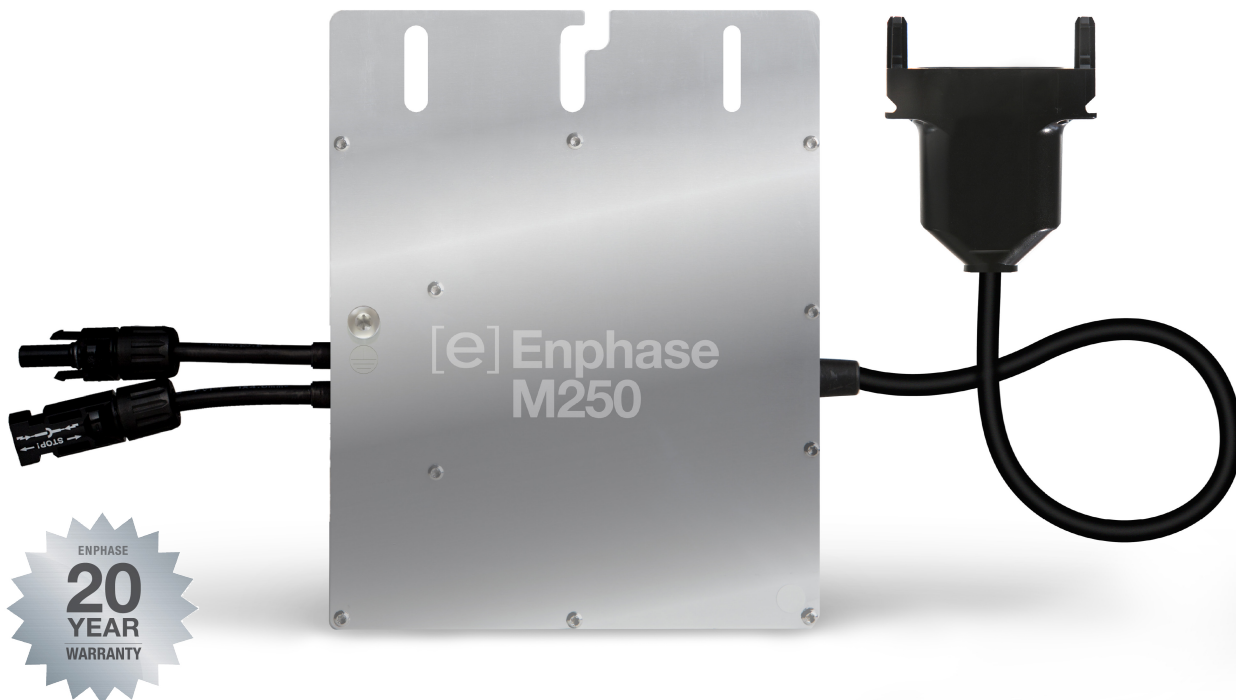


Enphase® M250



The **Enphase Energy Microinverter System** improves energy harvest, increases reliability, and dramatically simplifies design, installation, and management of solar power systems.

The Enphase System includes the microinverter, the Enphase® Envoy, and Enlighten®, Enphase's monitoring and analysis software.

PRODUCTIVE

- Optimised for higher-power modules
- Maximises energy production
- Minimises impact of shading, dust, and debris

RELIABLE

- 4th-generation product
- More than one million hours of testing
- System availability greater than 99.8%

SMART

- Quick and simple design, installation, and management
- 24/7 monitoring and analysis

SAFE

- Low-voltage DC reduces fire risk
- No single point of system failure
- Easy installation with Engage Cable

INPUT DATA (DC)	Model: M250-60-230-S22, M250-60-230-S25	Model: M250-72-2LN-S2, M250-72-2LN-S5
Recommended input power (STC)	210 - 310 W	210 - 310 W
Maximum input DC voltage	48 V	60 V
Peak power tracking voltage	27 V - 39 V	27 V - 48 V
Operating range	16 V - 48 V	16 V - 60V
Min/Max start voltage	22 V / 48 V	22 V / 48 V
Max DC short circuit current	15 A	15 A
OUTPUT DATA (AC)		
Peak output power	258 W	258 W
Rated output power	250 W	250 W
Rated output current	1.09 A	1.09 A
Nominal voltage	230 V	230 V
Nominal frequency	50.0 Hz	50.0 Hz
Power factor	>0.95	>0.95
Maximum units per 20 A branch circuit	14 (Ph + N), 42 (3Ph + N)	14 (Ph + N), 42 (3Ph + N)
Maximum units per cable section	14 (Ph + N), 24 (3Ph + N)	14 (Ph + N), 24 (3Ph + N)
Maximum output fault current	850 mA rms for 6 cycles	850 mA rms for 6 cycles
Current (inrush)	0 A	0 A
AC backfeed current to module	0 mA	0 mA
EFFICIENCY		
EN 50530 (EU) efficiency	95.7%	95.7%
Static MPPT efficiency (weighted, reference EN50530)	99.6%	99.5%
Night time power consumption	0.055 W	0.065 W
MECHANICAL DATA		
External operating temperature range (ambient)	-40°C to +65°C	
Internal operating temperature range	-40°C to +85°C	
Enclosure environmental rating	Outdoor - IP67	
Connector type, MC4	M250-60-230-S22 and M250-72-2LN-S2	
Connector type, Amphenol H4	M250-60-230-S25 and M250-72-2LN-S5	
Dimensions (WxHxD)	179 mm x 217 mm x 28 mm (with bracket)	
Weight	1.66 kg	
Cooling	Natural convection - No fans	
FEATURES		
Compatibility	60-cell PV modules	60-cell and 72-cell PV modules
Communication	Power line communication	
Monitoring	Enlighten Manager and MyEnlighten monitoring options	
Transformer design	High frequency transformers, galvanically isolated	
Compliance	AS4777, C10/11, CEI_0-21, EN50438, EN62109-1, EN62109-2, ERDF-NOI-RES_13E_V5, G59/2, G83/2, VDE-0126-1-1 + A1, VDE AR-N 4105	
Automatic disconnect	Automatic disconnect according to OVE / ÖNORM E 8001-4-712 (Installations in Austria limited to 3.68 KVa.)	

To learn more about Enphase microinverter technology, visit enphase.com/eu.